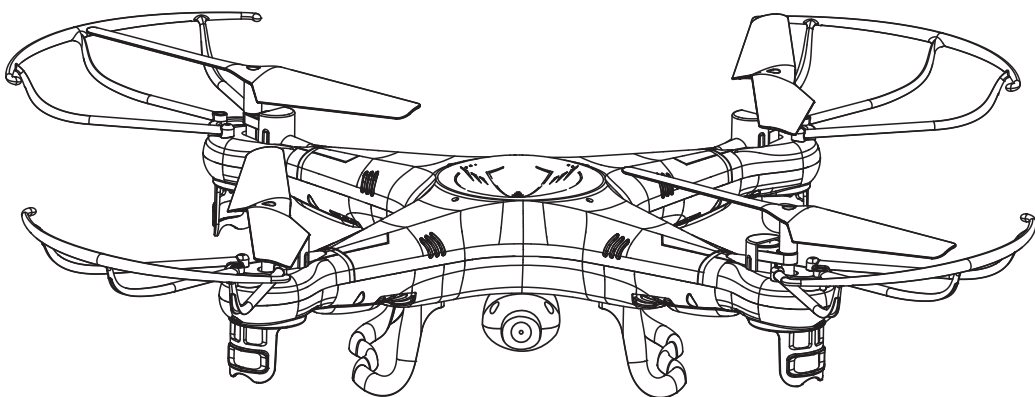


# **X5G** *GYROSCOPE 2.4G* **EXPLORERS**

**4CH 2.4G REMOTE CONTROL QUADCOPTER**



## **1 INSTRUCTION MANUAL**

IMPLEMENT STANDARD: GB/T26701-2011

### *Key features of quadcopter*

- Four-axis struture makes the quadcopter more flexible and rapid when flying. It is wind-resistant and can be flown indoor or outdoor.
- Built-in 6 axis gyroscope for precise hovering in the sky.
- Simple modular design makes changing parts easy.
- With 360° 3D eversion and throwing flight function.

The materials and specification mentioned in this instruction manual or the parts inside this package are for reference only. Any updated or changed please refer to our website: [www.symatoys.com](http://www.symatoys.com)

# PREFACE

Dear Customers:

Thank you for purchasing our flying model. Please read this instruction manual carefully in order to master the skill more quickly and operate this product more safely. In the mean time, please well keep the original of this instruction manual for future reference.

## IMPORTANT INSTRUCTION

1. This product is not a toy but a precise equipment that integrating mechanics and electronics with expertise of aerodynamics and high-frequency transmitting. It requires to be correctly assembled and debugged so as to prevent the accident from being happened. The product owner should operate or control it in safe way. Please noted that we won't take any responsibility for any wrong operation as this may result in severe injury or loss of property and we can not control the operating process during the time when the user assemble or use this product.
2. This product is suitable to be used by people who has operating experience in flying model or age no less than 14 years old.
3. The flying ground we required should be the local field and legal for remote control flying.
4. Once this product is sold , we won't be responsible for any safety responsibility during the time the user operates or uses or controls this product.
5. If there is any problem occurred during the time of using, operating or repairing, please reach our sales agent for details. The sales agent that we authorized will provide you with the technical support and after-sale service.

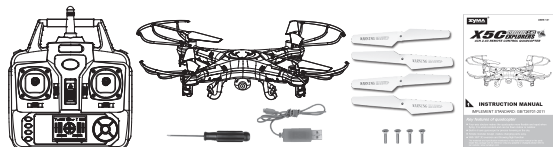
## SAFTY & CAUTIONS

This R/C flying model is a high dangerous commodity. Please make sure that it should be flied far away from the crowd. Please also pay more attention to the phenomenon such as incorrect assembly or damaged model or incorrect connection of electronic control equipment. Please also pay attention to the flying safety when operating and know more about the accident that may be happened due to your own negligence.

1. Keep it far away from the barrier or crowd.
2. Keep it far away from the moisten environment.
3. Use this product correctly and avoid operating by your own.
4. Keep it far away from the high-speed rotating part and heat source.
5. Please conform to the sequence of power ON/OFF. As the picture below shown, incorrect sequence of power ON/OFF may cause this product out of control and affect your own safety or others. Please form a good habit of switching on or switching off this product correctly.

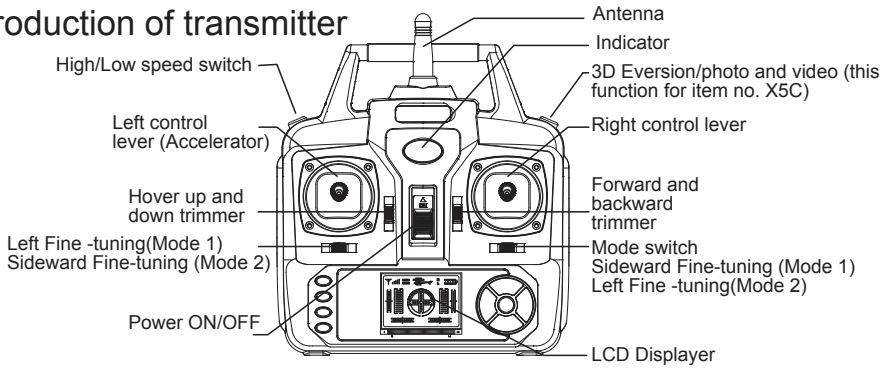
## CONTENTS

- Quadcopter
- Transmitter
- Main blades
- Screw 4PCS
- USB Charging Cable
- Screwdriver
- Instruction manual



# GET TO KNOW YOUR TRANSMITTER

## Introduction of transmitter



## Remote control Installing the battery

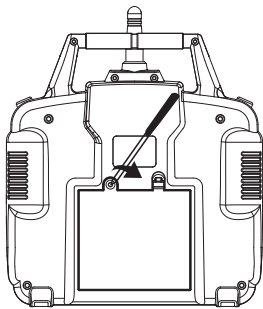


Figure 1

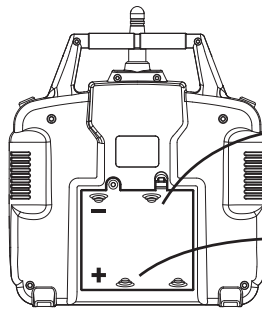
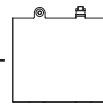
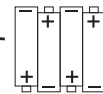


Figure 2



Battery Cover



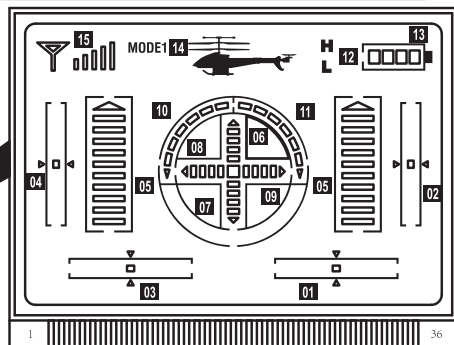
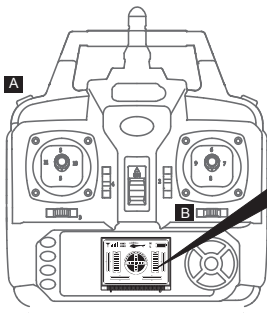
4 X AA(LR06)  
1.5V Batteries

1. Use a screwdriver to remove the screw on the back of transmitter, then open the battery cover (Figure 1).
2. Install 4 "AA" batteries (not included) into the back of transmitter then replace battery cover and reinstall the screw (Figure 2).



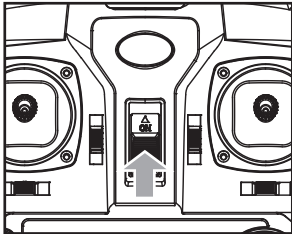
1. Install batteries with correct polarity.
2. Do not mix old and new batteries.
3. Do not mix different types of batteries.

## REMOTE CONTROL KEYPAD AND LCD MANUAL

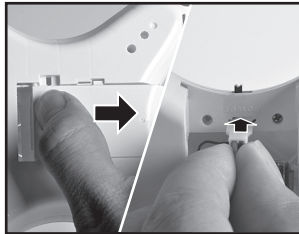


01. Sideward Fine-tuning :Power-on start in the centering.(Be turn Left/Right Fine -tuning in Mode2)
02. Forward/Backward fine-tuning:Power-on start in the middle.
03. Turn Left/Right fine-tuning:Power-on start in centering.(Be Sideward Fly Fine -tuning in Mode2)
04. Throttle lever fine-tuning: Power-on start in middle.
05. Throttle show:Power-on start in lowest level.(Left and Right throttle shows at one time)
06. Forward shows:Power-on start in the lowest level.(At the center square)
07. Backward shows:Power-on start in the lowest level.(At the center square)
08. Right sideward fly shows:Power-on start in the lowest level.(At the center square)
09. Left sideward fly shows:Power-on start in the lowest level.(At the center square)
10. Turn left: Pull left function lever to left, it will be higher, than quad copter turn left faster.
11. Turn right: Pull left function lever to right, it will be higher, than quad copter turn right faster.
12. High/Low speed: Press button "A" for seconds to switch between high speed mode or low speed mode. "H" means high speed and "L" means low speed.
13. Power shows:According to the battery's energy for the controller.
14. Default mode when power-on.When change to MODE 2, please keep pressing button "B" to right than return on the power of transmitter, the MODE on LCD displayer will be changed. Same steps to change to MODE 1 again.
15. Signal shows:Normally to full frame.

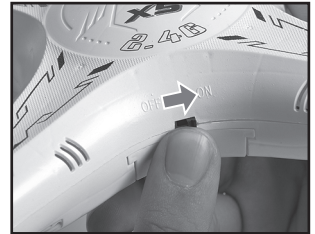
## READY TO FLY YOUR QUADCOPTER



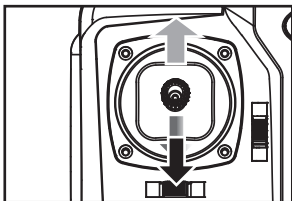
Step 1: Press the ON/OFF power switch up.



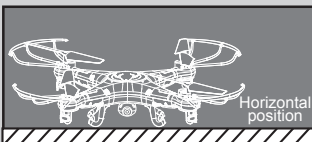
Step2: Open the battery cover and insert the battery into power port.



Step 3: Close the battery cover and turn on the quadcopter.



Step 4:Push the throttle lever to the highest position, and then pull it back to the lowest position. There will be one clear sound from the transmitter, this shows that the quadcopter has entered into the pre-fly state.



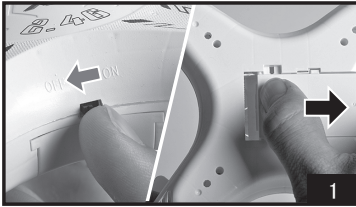
**TIPS:**When syncing your quadcopter keep it in a horizontal position to start to a stable flight.



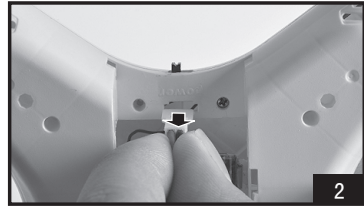
## CAUTIONS:

1. When the indicator of transmitter keep light on but the indicator of quadcopter is blinking slowly, it means signal matching was not successful. Please turn off the power both of transmitter and quadcopter than restart the transmitter and quadcopter.
2. If the quadcopter is still flying to one side dramatically or spinning while hovering, please switch off the power of both the quadcopter and transmitter and then repeat the pre-flying steps.
3. When the indicator of the quadcopter keeps flashing slowly, it means that the quadcopter has entered into the low battery state. This time you need to charge the quadcopter with the USB cable provided.

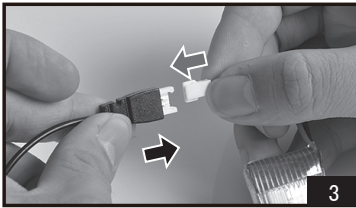
## CHANGE BATTERY OF QUADCOPTER



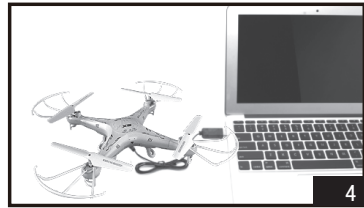
1. Push the on/off switch of quadcopter to OFF position than open the battery cover.



2. Pull out the battery wire from the power port.



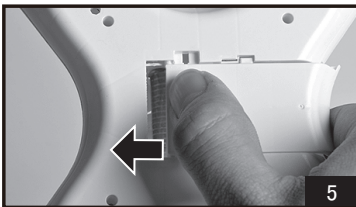
3. Take out the USB charging cable, and insert the battery power port to the small end of it (Make sure the ports connect tight and correct ).



4. To charge battery, please insert the USB port of provided USB charging cable to anyone USB port of computer. The indicator on USB cable will light ON during charging battery, than it will light OFF when battery fully charged.

Caution:

When using the computer for charging, please remember to pull out the charging cable before shutting down the computer. Take the battery cover , and close the battery cover on the quadcopter.



5. Reconnect the battery wire to power port than close the battery cover.

Charging time: about 75 minutes — Flying time: about 7 minutes!